



PUSHING POTENTIAL.

202603-90-LBL

PITT-LM-9194

Beauty Essentials
90 Vegetarian Capsule
Date: 7-1-2020

SPECIFIC TO THIS ORDER

Label Version #: V2

VEEVA Version #: V2

PRODUCT INFORMATION

Label Size: 7.125" x 2.375" 225cc

Fonts: Akzidenz Grotesk Black, Din (Bold, Light, Regular)

Stock: Silver metalized paper (r70365)

Laminate: Gloss-R70360

QE-023058

COLOR

PANTONE 3015 C

DIELINE

WHITEPLATE

Manufactured for: Douglas Laboratories
600 Boyce Road, Pittsburgh, PA 15205
www.douglabs.com 1.800.245.4440

Suggested Usage: As a dietary supplement, adults take 3 capsules 1-2 times daily with a meal or as directed by a health professional.

Warnings: If you are pregnant, lactating, have any health condition, particularly liver problems, or taking any medication, consult your health professional before using this product.

Metafolin® is a registered trademark of Merck KGaA, Darmstadt, Germany.

*FloraGLO is a registered trademark of Kemin Industries, Inc. Zeaxanthin is sourced from OPTISHARP® brand. OPTISHARP® is a trademark of DSM.

ChromeMate® brand niacin-bound chromium. ChromeMate® & logo are trademarks of Lonza or its affiliates.

KEEP OUT OF THE REACH OF CHILDREN.

Store in a cool, dry place. Use only if safety seal is intact.

Gluten-free, Non-GMO

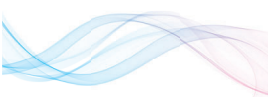
This statement has not been evaluated by the Food and Drug Administration. This product is not intended to diagnose, treat, cure, or prevent any disease.

Contents may not fill package in order to accommodate required labeling. Please rely on stated quantity.

Formula # 202603 V2



BEAUTY ESSENTIALS
DAILY MULTIVITAMIN ENHANCED WITH POLYPHENOLS*



THERE'S SCIENCE IN BEAUTY™

DIETARY SUPPLEMENT
90 VEGETARIAN CAPSULES

Supplement Facts

Serving Size 3 Vegetarian Capsules • Servings Per Container 30

	Amount Per Serving	%DV
Vitamin A (as beta carotene)	1,125 mcg	125%
Vitamin C (as ascorbic acid)	250 mg	278%
Vitamin D ₃ (as cholecalciferol)	10 mcg (400 IU)	50%
Vitamin E (as d-alpha tocopherol succinate)	34 mg	227%
Thiamin (as thiamin HCl) [B ₁]	25 mg	2,083%
Riboflavin (as vitamin B ₂ and 28% as riboflavin 5' phosphate [activated B ₂])	17.35 mg	1,335%
Niacin (as niacin and 67% niacinamide)	37.5 mg	234%
Vitamin B ₆ (as pyridoxine HCl and 40% as pyridoxal 5' phosphate [activated B ₆])	10.4 mg	612%
Folate (as Metafolin®, L-5-MTHF)	667 mcg DFE (400 mcg L-5-MTHF)	167%
Vitamin B ₁₂ (as methylcobalamin)	250 mcg	10,417%
Biotin	400 mcg	1,333%
Pantothenic Acid (as calcium pantothenate) [B ₅]	25 mg	500%
Choline (as choline bitartrate)	20 mg	4%
Calcium (as calcium citrate)	150 mg	12%
Iodine (as potassium iodide)	100 mcg	67%
Magnesium (as magnesium citrate)	75 mg	18%
Zinc (as zinc picolinate)	7.5 mg	68%
Selenium (as selenomethionine)	100 mcg	182%
Copper (as copper glycinate)	1 mg	111%
Manganese (as manganese aspartate)	2.5 mg	109%
Chromium (as chromium polynicotinate)	50 mcg	143%
Molybdenum (as molybdenum aspartate)	50 mcg	111%
Potassium (as potassium aspartate)	49 mg	1%
N-Acetyl-L-Cysteine (free-form)	50 mg	*
Inositol	50 mg	*
Alpha Lipoic Acid (thioctic acid)	50 mg	*
Boron (as boron glycinate)	1 mg	*
Vanadium (as vanadium aspartate)	50 mcg	*
Polyphenol Blend:		
Blueberry Extract (<i>Vaccinium angustifolium</i> , fruit)	50 mg	*
Pomegranate Extract (<i>Punica granatum</i> , fruit, standardized to contain 40% punicosides)	50 mg	*
Green Tea Extract (<i>Camellia sinensis</i> , leaf, standardized to contain 65% total tea catechins, 23% epigallocatechin [EGCG])	50 mg	*
Olive Extract (<i>Olea europaea</i> , fruit, standardized to contain 1% hydroxytyrosol)	25 mg	*
Grape Extract (<i>Vitis vinifera</i> , seed, standardized to contain 92% polyphenols)	25 mg	*
Quercetin	25 mg	*
Carotenoid Complex:		
FloraGLO® Lutein	3 mg	*
Zeaxanthin	500 mcg	*
Proprietary Mixed Carotenoid Blend (as lutein, lycopene, zeaxanthin)	212 mcg	*

*Daily Value (DV) not established

Other ingredients: Hydroxypropyl methylcellulose [capsule], ascorbyl palmitate

3
10539 97922
8



Scan to learn about our manufacturing excellence